

FRIENDS NEWSLETTER

Winter 2023/24



WINTER 23/24 NEWSLETTER

Welcome to the Friends – Play for Disabled Children’s winter newsletter.

Happy New Year everyone! Wishing you all lots of love and best wishes and we hope you have all had a pleasant start to 2024!

It was wonderful to see so many of you in recent months and we hope all the festivities throughout December helped to get you in the festive spirit.

Paula, Mel and Emma x

Upcoming events

After some much needed rest, we are back at it and busy planning lots of exciting activities for you all. We are still in the process of finalising everything when this newsletter goes out – so please keep an eye on the website calendar, the events Facebook group, and your emails for up-to-date information about what we have got coming up!

Looking forward to seeing you all very soon.

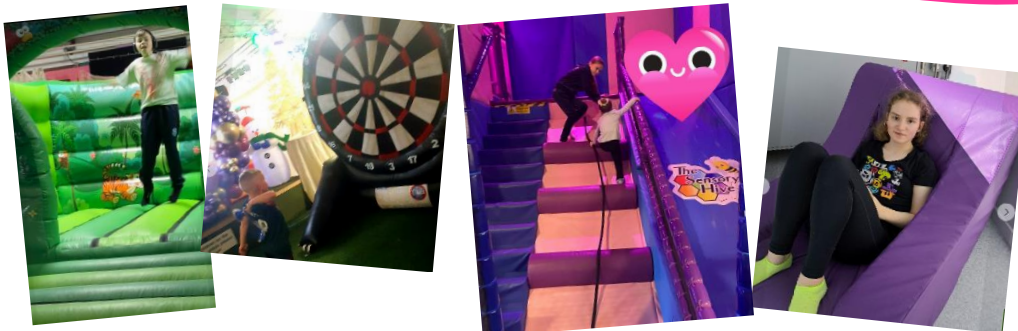
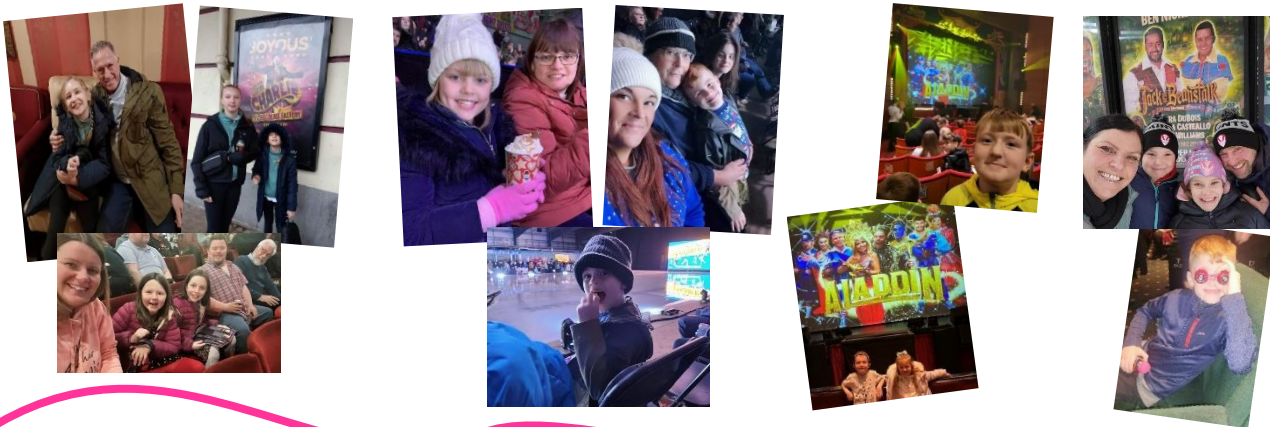
Choir will resume on 16/01/24.

FUNDRAISING

There was a great amount of interest in the Anfield abseil and we will be announcing the date for this soon – so keep your eyes peeled!

IT'S SHOWTIME!

WE GOT TO EXPERIENCE THE THRILL OF THE THEATRE AGAIN WITH CHARLIE AND THE CHOCOLATE FACTORY, WE WERE WOWED BY THE ICE SKATERS DURING THEIR PERFORMANCE OF THE WIZARD OF OZ ON ICE AND NO CHRISTMAS SEASON IS EVER COMPLETE WITHOUT A TRIP TO THE PANTO, WE WERE FORTUNATE ENOUGH TO SEE NOT ONE, BUT TWO – JACK AND THE BEANSTALK AND ALADDIN.



We blew out the cobwebs of 2023 and started the New Year with a trip to the Sensory Hive and the Tunza Centre for the ever popular Ready, Steady, Bounce event!



★ IT'S ★
CHRISTMAS!!

It's the most wonderful time of the year...and also the busiest! We had an absolutely jam packed Christmas schedule with a visit to see the lights at Dunham Massey, a journey on the Santa train, a trip to visit Farmer Christmas, a chance to sit down and enjoy a screening of Elf at Lucem cinema, two wonderful opportunities to come together for the Christmas parties at the Tunza Centre, a visit to see Father Christmas in the lovely setting at The Hayloft, and a final opportunity to see some more lights at the Chester Zoo Lanterns.

We've compiled just a handful of the wonderful pictures you sent to us from these fantastically festive events!



THANK YOU

- A massive thank you to Taylor Wimpey for their huge donation of £600 from their Community Chest which enabled us to subsidise the ticket cost for our Christmas visit to The Hayloft
- We really appreciate everyone who came to visit us at the Christmas market at the Tunza Centre – you helped us to raise an impressive £190!
- We were honoured to receive a very kind donation of £50 from Eccleston Lane Ends, thanks to their Toast Tuesday event
 - One of our longstanding supporters, Forge Gym, has kindly provided a donation of £35

Friends - Play for Disabled Children is a registered charity supporting families in St Helens and the surrounding areas. Our charity number is 1167995. We are registered in England & Wales.
Tel: Paula Jones - 07806 924774
Tel: Melanie Battye - 07562 869613
Email: info@friendsplay.org.uk

We're on the Web!
Find us at:
www.friendsplay.org.uk