

FRIENDS NEWSLETTER

Winter 24



WINTER 2024 NEWSLETTER

Welcome to the Friends – Play for Disabled Children’s winter newsletter.

We hope the first quarter of the year has treated you all well.

We’re already looking at some exciting activities for summer but what a great winter schedule we have had – we hope you all enjoy looking back over some of the highlights in this newsletter!

Paula, Mel and Emma x

Upcoming events

We’re currently busy planning lots of exciting activities for you all for Easter and the rest of Spring. We are still in the process of finalising everything when this newsletter goes out – so please keep an eye on the website calendar, the events Facebook group, and your emails for up-to-date information about what we have got coming up!

Looking forward to seeing you all very soon.

FUNDRAISING

Thank you to everyone who donated to us via Easy Fundraising, we received a fantastic £41 this quarter. We are now also registered with ‘Give as you Live’, another platform that provides free donations to us when you shop – so please consider using this as a way for us to generate some much needed funds.

Fun at the Theatre!

WE ENJOYED TWO FANSTASTIC TRIPS TO THE THEATRE THIS QUARTER TO SEE THE MAJOR PRODUCTIONS SHREK AND MADAGASCAR. FANS OF BOTH FILMS ENJOYED LOTS OF LAUGHTER WITH SOME FAMILIAR CHARACTERS AND EVERYONE GOT TO ENJOY A BOOGIE TO ‘WE LIKE TO MOVE IT’ WITH KING JULIAN AT THE END OF MADAGASCAR.



We’ve spent lots of time at a Friends favourite location -the Tunza Centre! We’ve enjoyed another bounce session, lots of dance classes, some relaxing yoga, an enjoyable craft session and a fun filled sports party!



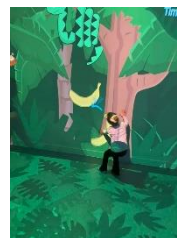


★ WE LOVE DISNEY! ★

We were back again at the M&S Bank Arena in Liverpool recently to attend one of our most popular activities - a performance of Disney on Ice. It's always great seeing so many of you enjoying the impressive dancing and skating from some of your most beloved characters. We also got to spend time with some other Disney favourites, Lilo & Stitch at Lucem Cinema. A fantastic time was had by all at both events!



WE'VE ALL ENJOYED SOME GREAT MOVEMENT RECENTLY TOO WITH A SESSION AT THE SENSORY HIVE AND WE MADE A BIG SPLASH WITH THE RETURN OF A FUN AND FLOATS SESSION! HERE ARE SOME OF THE PHOTO HIGHLIGHTS....



THANK YOU

- We send lots of love and well wishes to Sarah Cunliffe who kindly donated £110 in memory of her late husband, we really appreciate this thoughtful gesture.
- Thank you to the pupils from Pontuile School who kindly donated the profits they made from their Enterprise Project - a huge well done to you all too.
- A huge thank you to one of our biggest supporters and champions - Ian at the Tunza centre for donating 200 Easter Eggs for our members.
- One of our longstanding supporters, Gary Crickson from Forge Fitness, has kindly provided free, regular adapted gym sessions for our members - we have all really enjoyed and appreciated these!

Friends - Play for Disabled Children is a registered charity supporting families in St Helens and the surrounding areas. Our charity number is 1167995. We are registered in England & Wales.
Tel: Paula Jones - 07806 924774
Tel: Melanie Battye - 07562 869613
Email: info@friendsplay.org.uk

We're on the Web!
Find us at:
www.friendsplay.org.uk